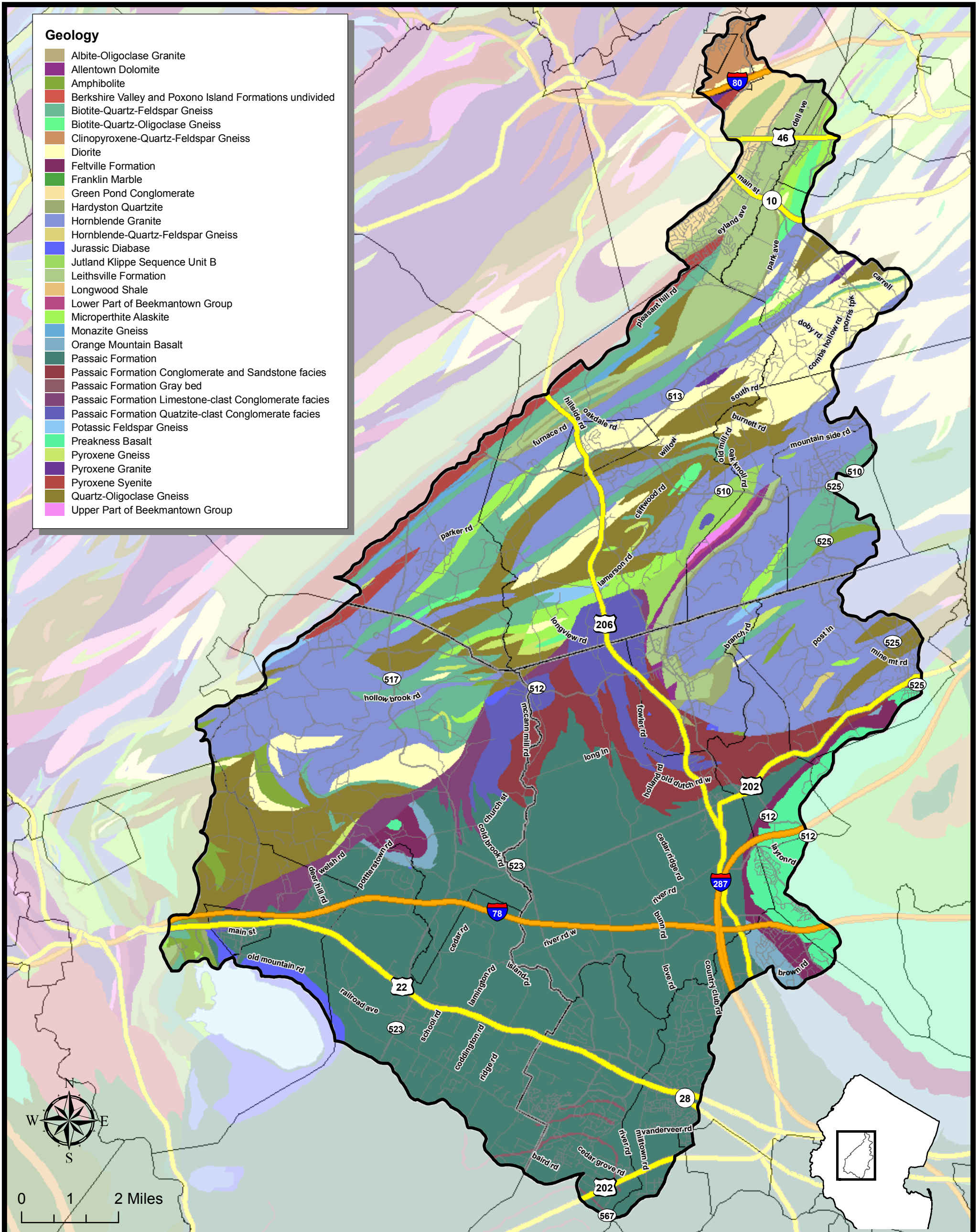


Geology

- Albite-Oligoclase Granite
- Allentown Dolomite
- Amphibolite
- Berkshire Valley and Poxono Island Formations undivided
- Biotite-Quartz-Feldspar Gneiss
- Biotite-Quartz-Oligoclase Gneiss
- Clinopyroxene-Quartz-Feldspar Gneiss
- Diorite
- Felville Formation
- Franklin Marble
- Green Pond Conglomerate
- Hardyston Quartzite
- Hornblende Granite
- Hornblende-Quartz-Feldspar Gneiss
- Jurassic Diabase
- Jutland Klippe Sequence Unit B
- Leithsville Formation
- Longwood Shale
- Lower Part of Beekmantown Group
- Microperthite Alaskite
- Monazite Gneiss
- Orange Mountain Basalt
- Passaic Formation
- Passaic Formation Conglomerate and Sandstone facies
- Passaic Formation Gray bed
- Passaic Formation Limestone-clast Conglomerate facies
- Passaic Formation Quartzite-clast Conglomerate facies
- Potassic Feldspar Gneiss
- Preakness Basalt
- Pyroxene Gneiss
- Pyroxene Granite
- Pyroxene Syenite
- Quartz-Oligoclase Gneiss
- Upper Part of Beekmantown Group



- Watershed Boundary
- Round Valley Reservoir
- Interstate
- County
- US/State
- Local
- Municipal Boundaries
- County Boundaries

**Upper Raritan Watershed
Environmental Resource Inventory
Geology Map**



GIS Department
4-23-2007
Scale: 1:120,000

Source:
Geology - NJ Geological Survey (2007)

Disclaimer: This information is provided with the understanding that it is not guaranteed to be correct or complete, and conclusions drawn from such information are the sole responsibility of the user.