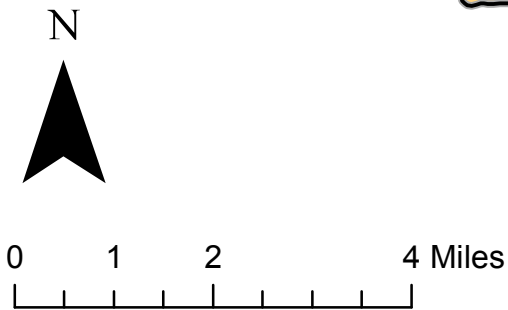
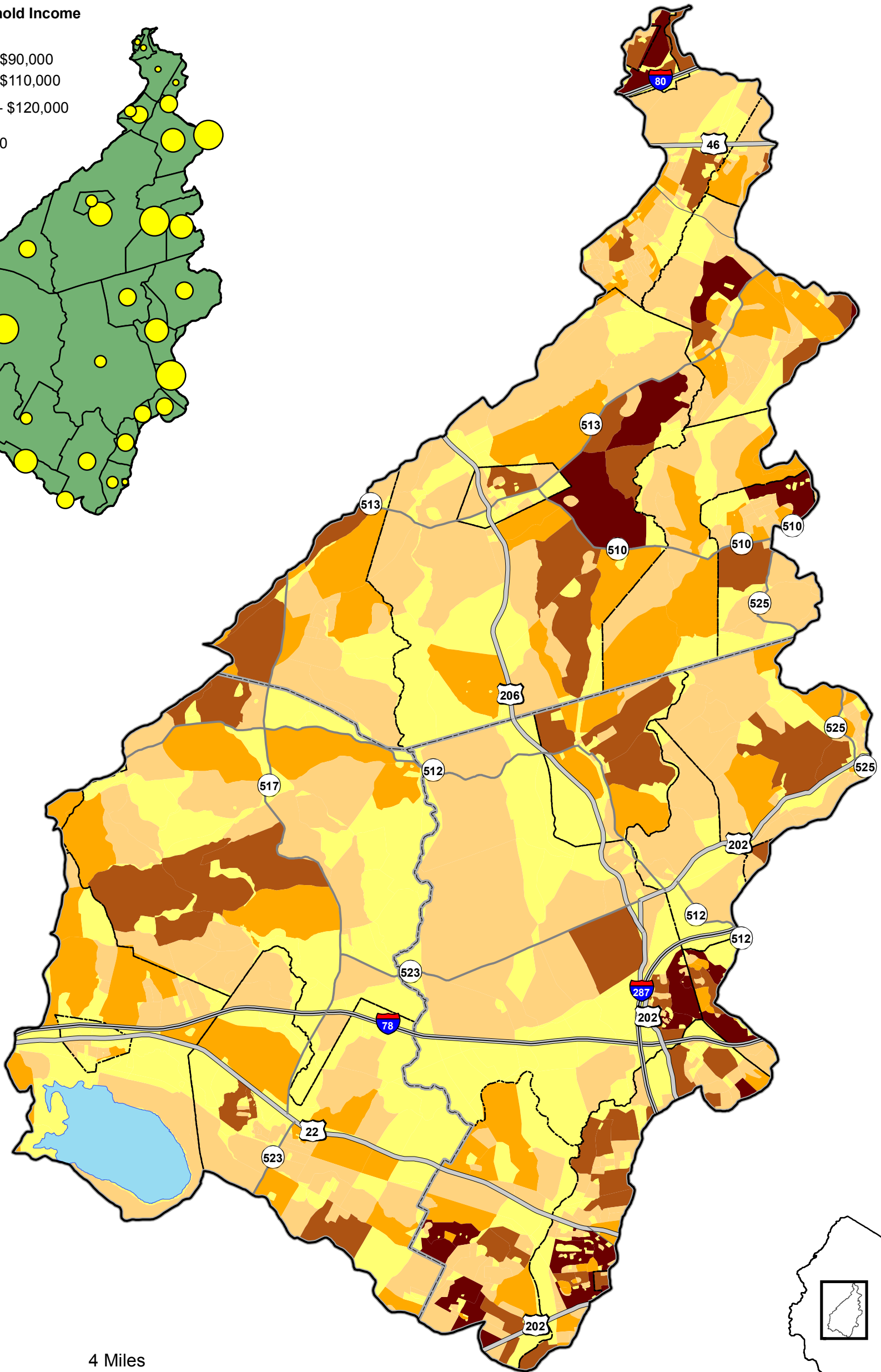
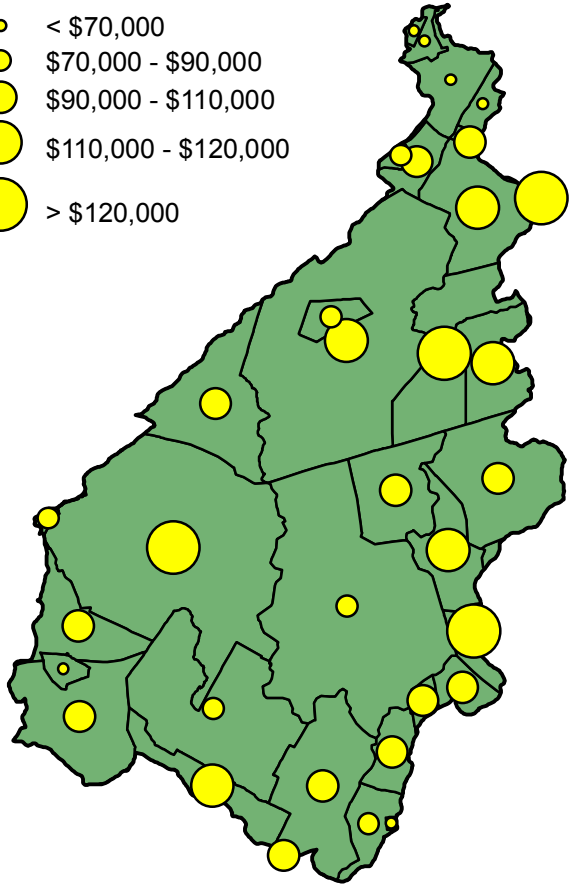


**Median Household Income**

- < \$70,000
- \$70,000 - \$90,000
- \$90,000 - \$110,000
- \$110,000 - \$120,000
- > \$120,000



Watershed Boundary	County Boundaries
<b>Major Roads</b>	Municipal Boundaries
Interstate	<b>Census Block 2000</b>
US Highways	< 50
Routes	50 - 150
State	150 - 250
reservoirs	250 - 500
	> 500

**Upper Raritan Watershed**  
Census Block 2002



GIS Department  
6-12-2007

Source:  
Census Block - (2002) NJDEP; ORIM

Disclaimer: This information is provided with the understanding that it is not guaranteed to be correct or complete, and conclusions drawn from such information are the sole responsibility of the user.