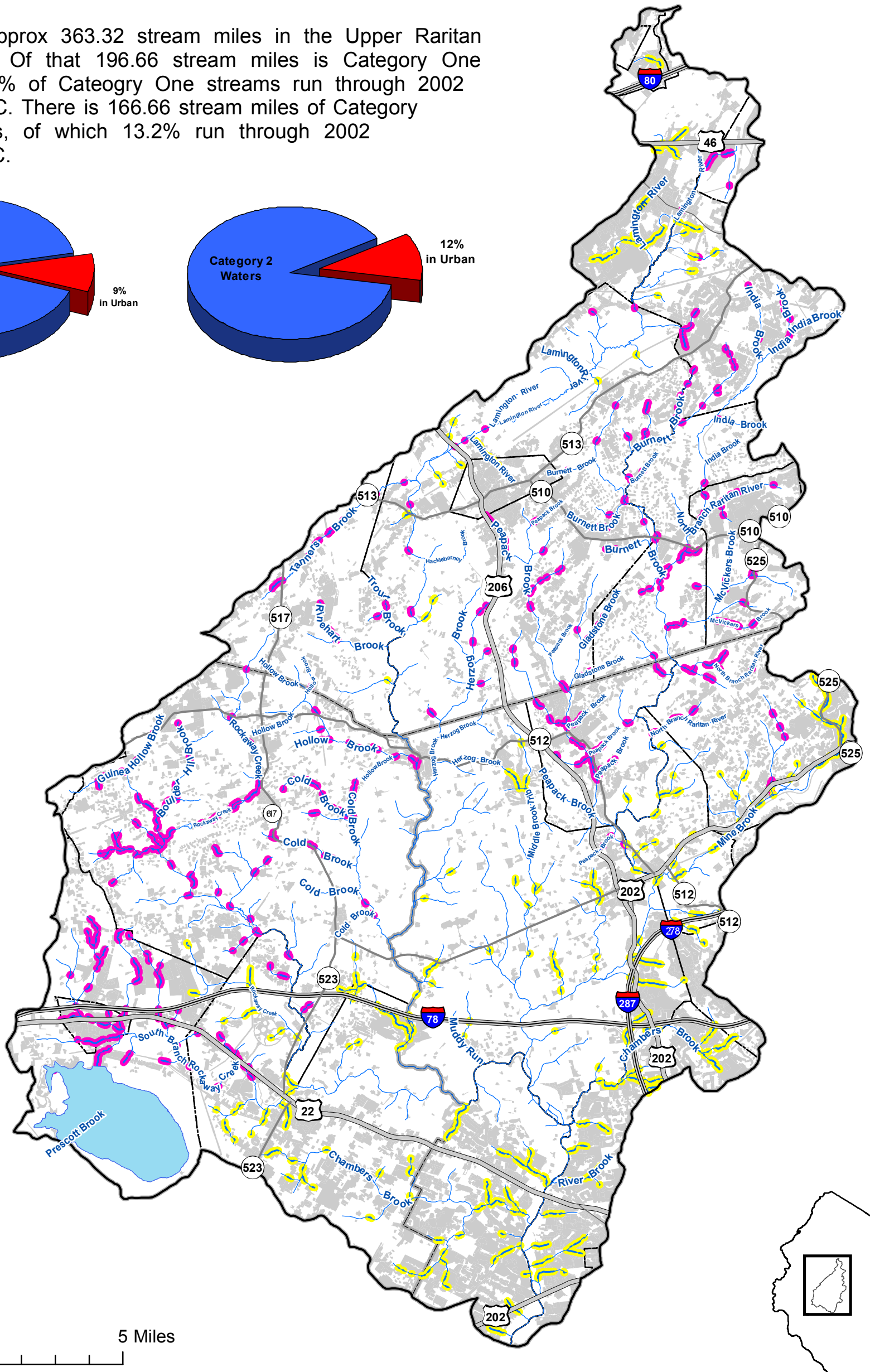
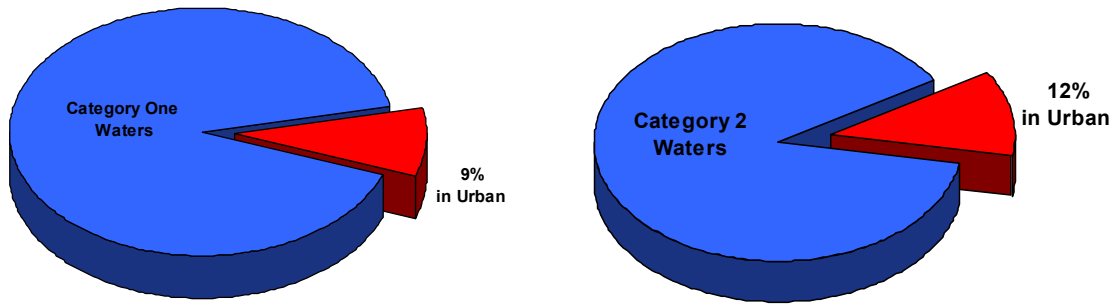


There is approx 363.32 stream miles in the Upper Raritan Watershed. Of that 196.66 stream miles is Category One waters. 9.6% of Category One streams run through 2002 Urban LULC. There is 166.66 stream miles of Category Two waters, of which 13.2% run through 2002 Urban LULC.



- Watershed Boundary
- Streams
- Major Roads**
- Interstate
- US Highways
- Routes
- State
- reservoirs
- Urban C2 Streams
- Urban C1 Streams
- County Boundaries
- Municipal Boundaries
- 2002 Urban LULC

Upper Raritan Watershed Surface Water Quality Standards

GIS Department
4-23-2007



Source:
2002 Urban LULC - (2002) NJDEP
Streams - Surface Water Quality Standards
(2006) NJDEP
Rivers - NJDEP (stateriv)

Disclaimer: This information is provided with the understanding that it is not guaranteed to be correct or complete, and conclusions drawn from such information are the sole responsibility of the user.