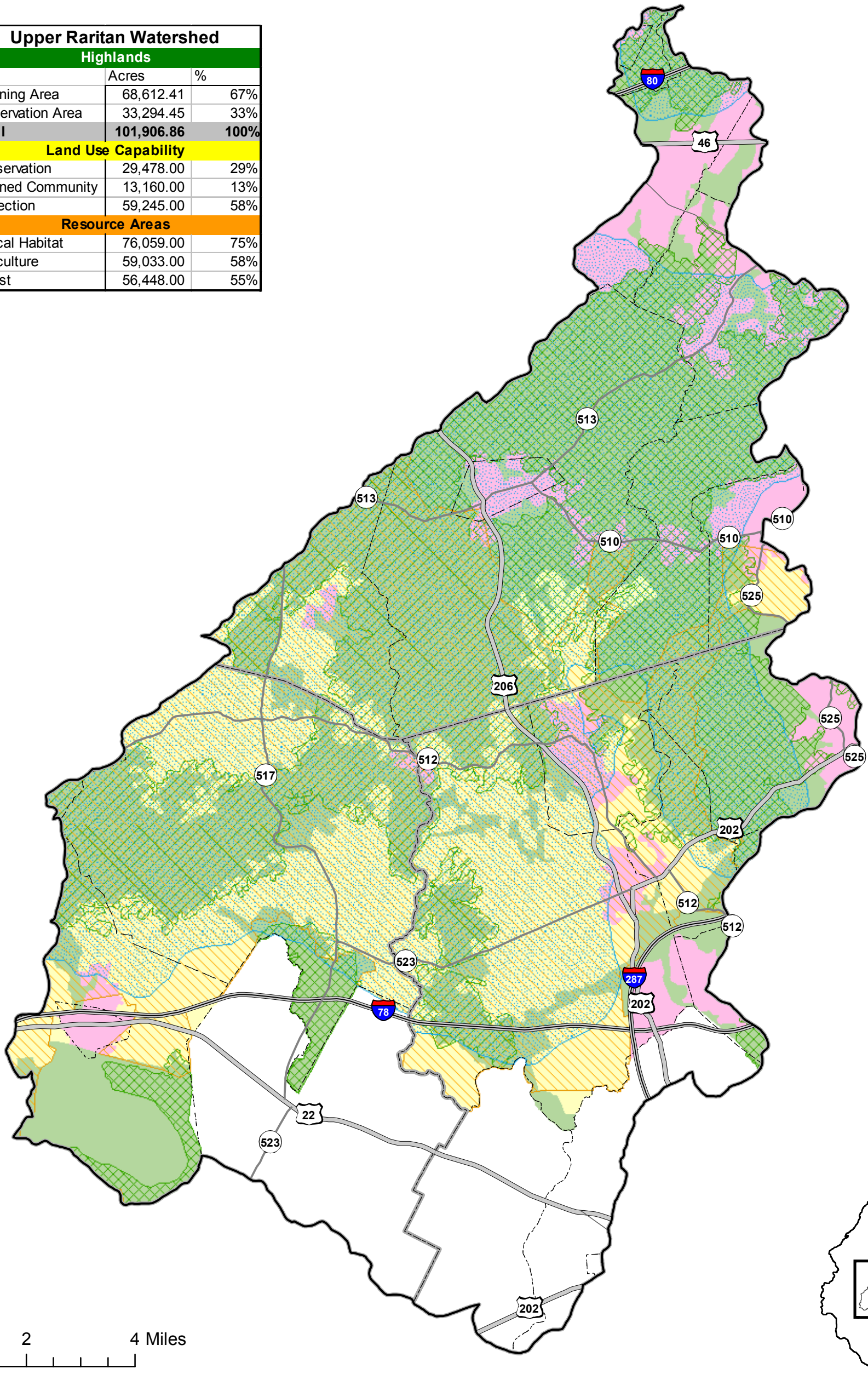


Upper Raritan Watershed Highlands		
	Acres	%
Planning Area	68,612.41	67%
Preservation Area	33,294.45	33%
Total	101,906.86	100%
Land Use Capability		
Conservation	29,478.00	29%
Planned Community	13,160.00	13%
Protection	59,245.00	58%
Resource Areas		
Critical Habitat	76,059.00	75%
Agriculture	59,033.00	58%
Forest	56,448.00	55%



- Watershed Boundary
- Major Roads**
- Interstate
- US Highways
- Routes
- State
- County Boundaries
- Municipal Boundaries
- Critical Habitat Resource Area
- Agriculture Resource Area
- Forest Resource Area
- Land Use Capability**
- Conservation
- Planned Community / Specially Planned Areas
- Protection

Upper Raritan Watershed
Highlands Land Use Capability Map



GIS Department
6-12-2007

Source:
Highlands - (2004) NJDEP
Land Use Capability - (2006) Highlands Council

Disclaimer: This information is provided with the understanding that it is not guaranteed to be correct or complete, and conclusions drawn from such information are the sole responsibility of the user.