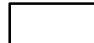


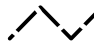
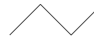




Soil Ratings for Agricultural Capability Class

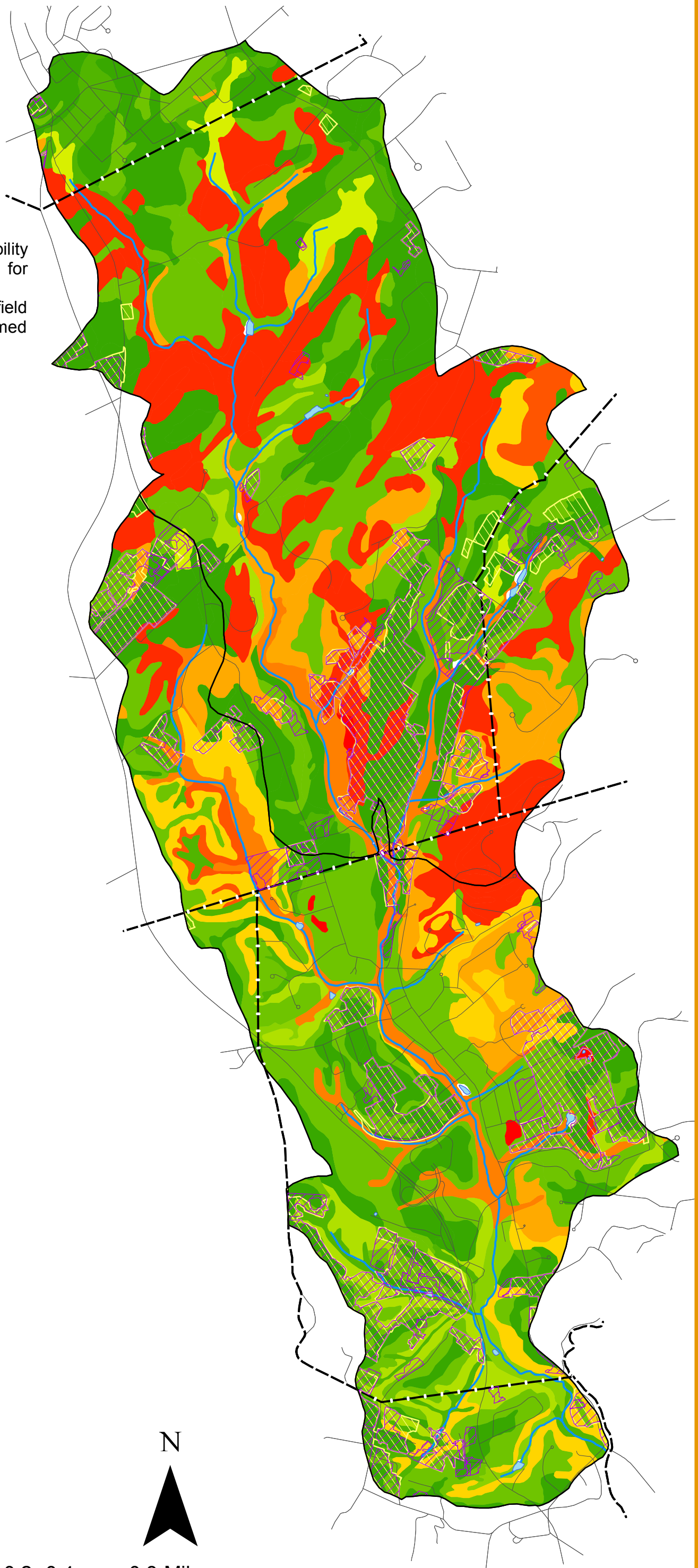
The non-irrigated agricultural capability classification shows the suitability of soils for most kinds of farming. The classification is based on limitations of soils when used for field crops, the risk of damage when they are farmed and the way the soils respond to treatment.

Legend

-  Subwatershed Boundaries
-  Agricultural Use 2002
-  Agricultural Use 1999
-  Municipal Boundaries
-  Roads
-  Lakes & Ponds
-  Rivers & Streams

Agricultural Capability Classification

-  2E
-  2W
-  3E
-  3W
-  4E
-  4W
-  5W
-  6E
-  6S
-  6W
-  7E
-  7S
-  8S



December 2006
Produced by
Upper Raritan Watershed Association
GIS Department

Data Sources:
NJ Dept of Environmental Protection
NJ Dept of Transportation
US Geological Survey
USDA Natural Resources Conservation Service

N



0 0.2 0.4 0.8 Miles

