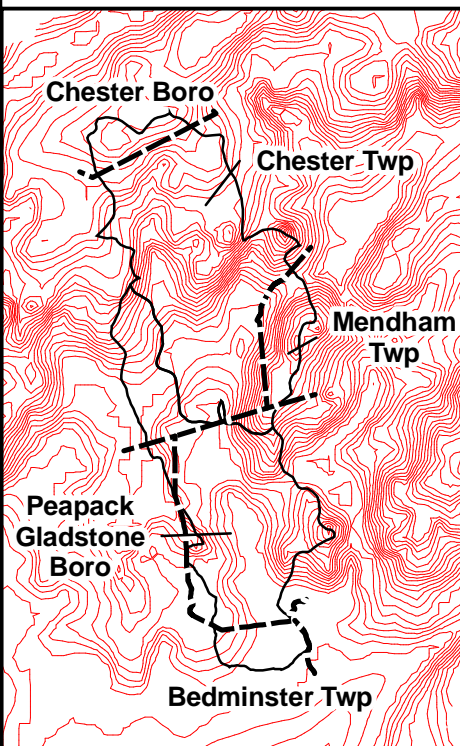
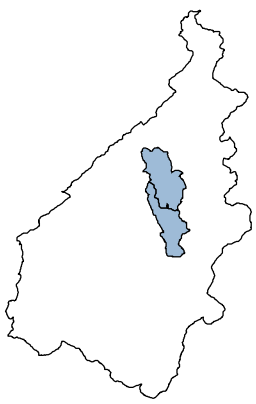


Peapack Brook Subwatershed

Critical Riparian Areas

- ^ Restoration Site
- () Dams
- ▭ Subwatershed Boundaries
- ☁ Lakes & Ponds
- ~ Rivers & Streams
- Impervious Surface
- Crown Closure > 50%
- Crown Closure 10% - 50%
- ☁ Riparian Area
- - - Municipal Boundaries
- ~ Roads

Dam Sites located in the Riparian Areas
 1. Chester Pond Dam
 2. Peapack-Gladstone Reservoir Dam



~ Steep Slope Edge

Data Sources:
 NJ Dept of Environmental Protection
 NJ Dept of Transportation
 NJ Water Supply Authority
 US Geological Survey
 USDA Natural Resources Conservation Service
 Federal Emergency Management Agency

